

Rethinking the Dashboard

|||||

Data in context

OBSERVABILITY
FORUM FINLAND'25

JUNE 4, 2025 | ESPOO

 dynatrace

High Level Evolution

////////////////////

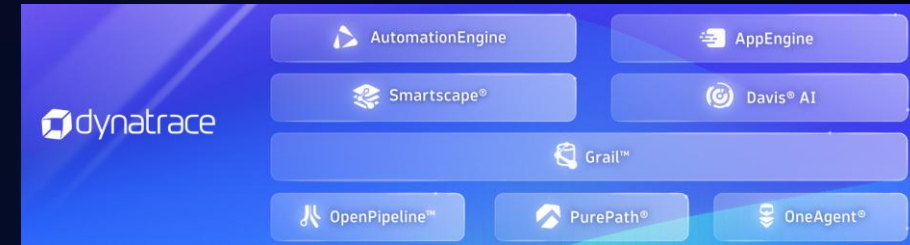


Data-on-Glass

- Get the data in and dashboard everything.
 - All journeys start at a dashboard

Answers, not just data

- AI for problem detection and RCA.
- Out-of-the-box analysis for key user journeys.
- Dashboards for everything else



Answer-driven Automation

- Automate most manual / repetitive tasks.
- Access to data in context.
 - Notebooks for intuitive / natural investigations / reporting.
- Dashboards for core high-level visualisations (e.g. business dashboards, SLOs etc)

Dashboards transitioning into the future

////////////////////

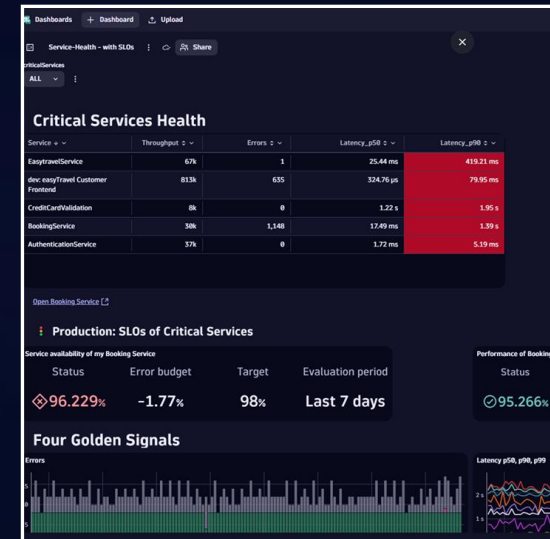
Business Process Overview



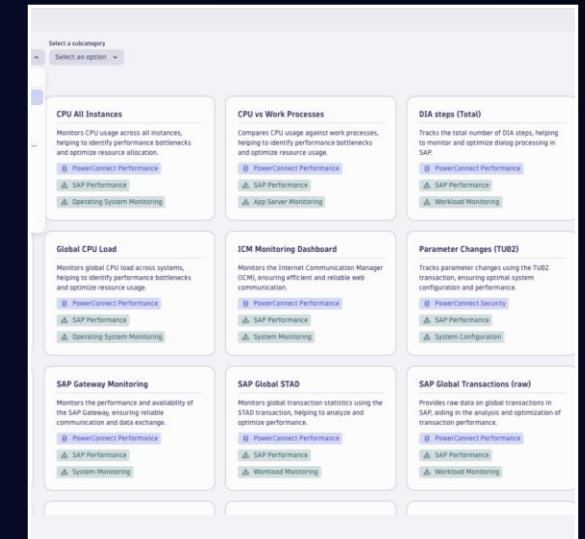
Live Business Insights



High Level Tech Reporting (SLOs)

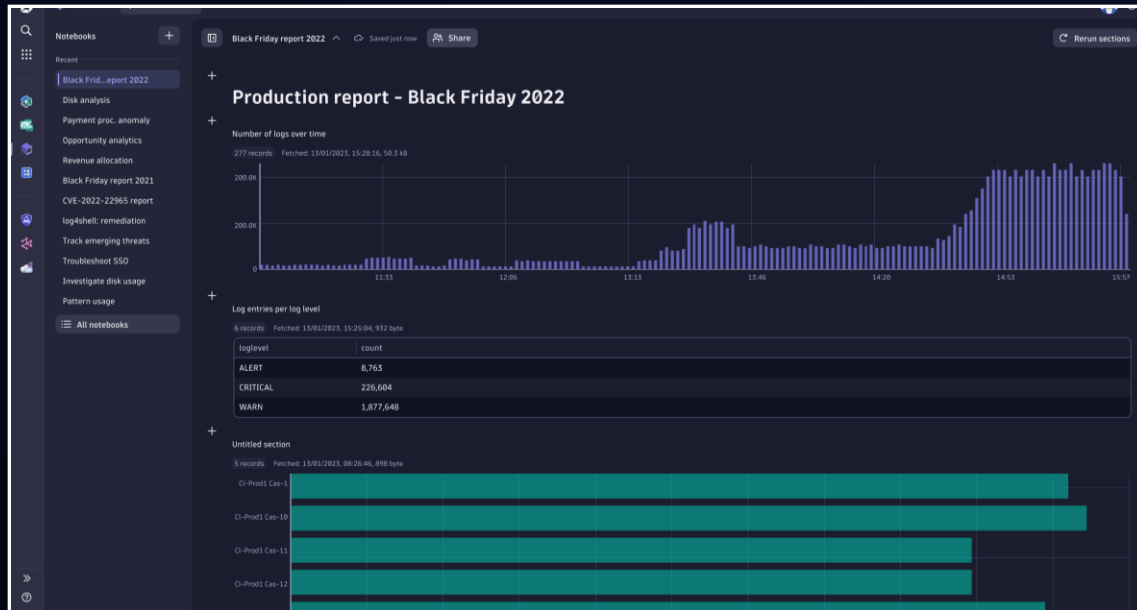


App MVP

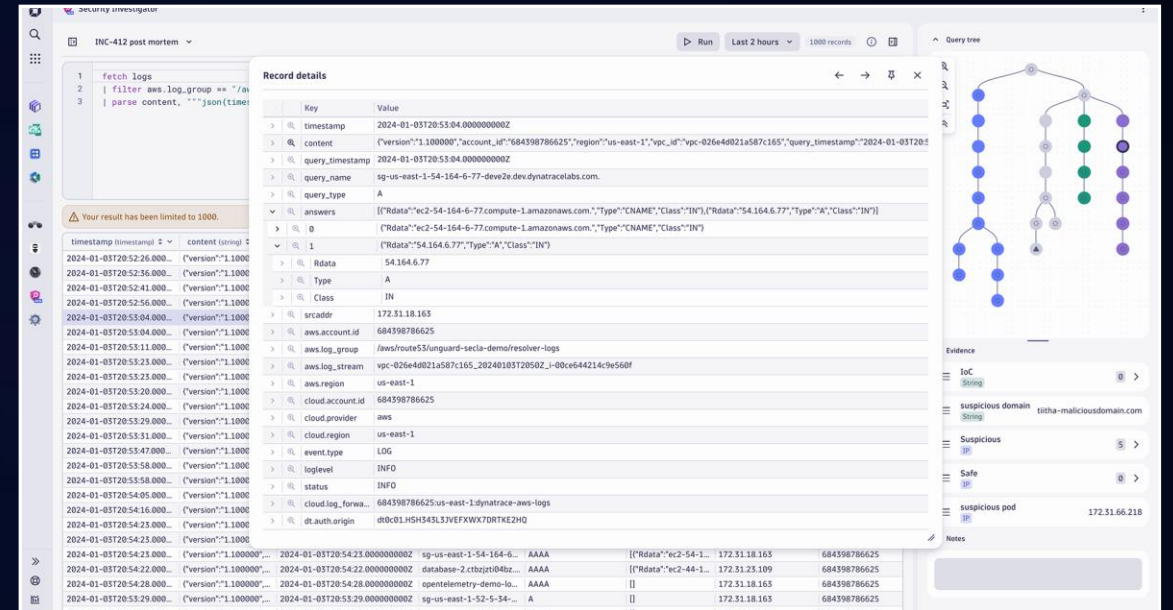


Analytics / Reporting / Investigation

|||||



Notebooks



Security Investigator

Data in Context

Only context turns data/signals into insights.

Data without context is just noise



Data collection
explodes



Making sense
from data



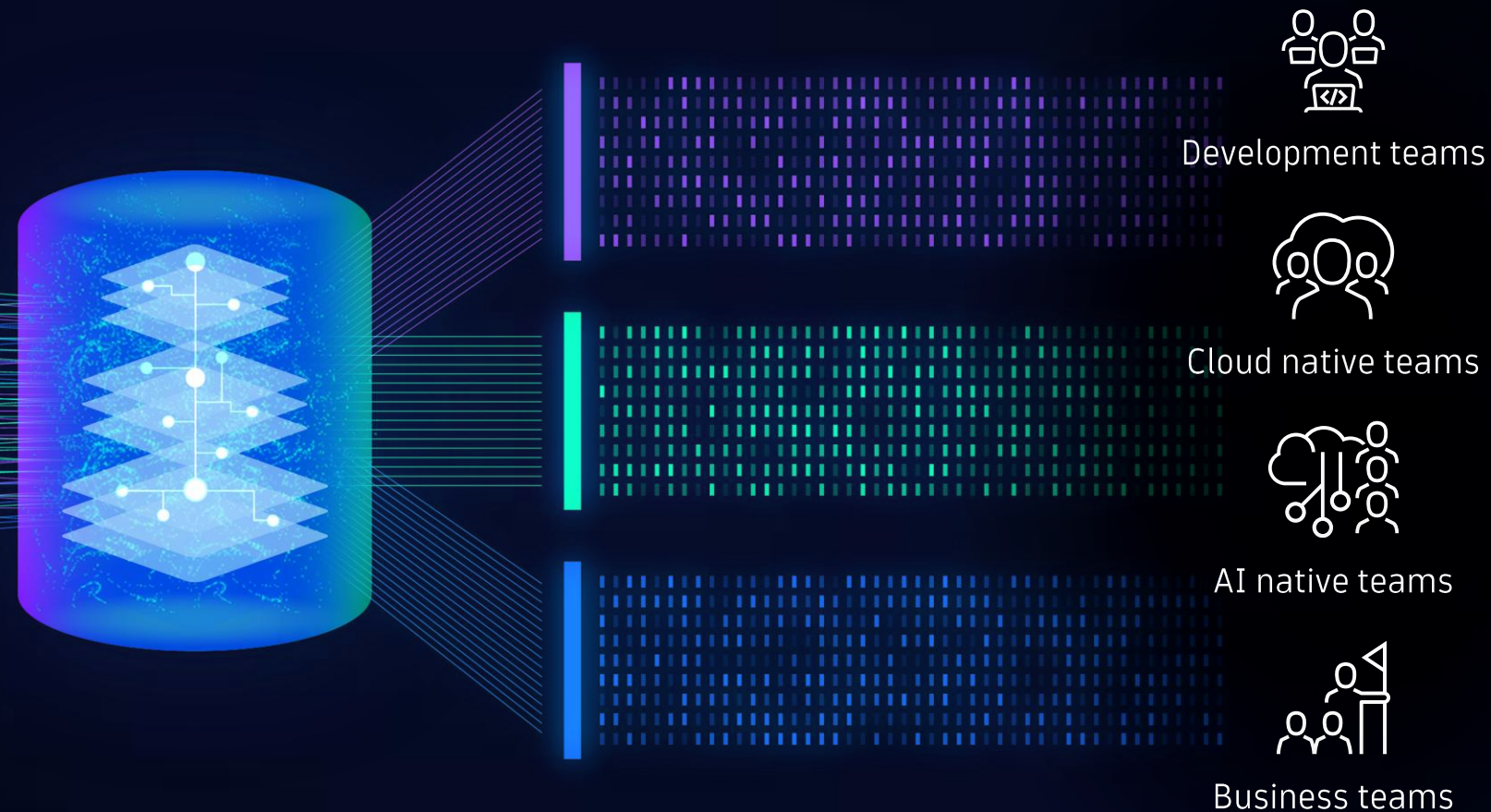
Observability and security
converges with need for
automation



BizDevSecOps &
Everything-as-Code



Designed to drive your business forward



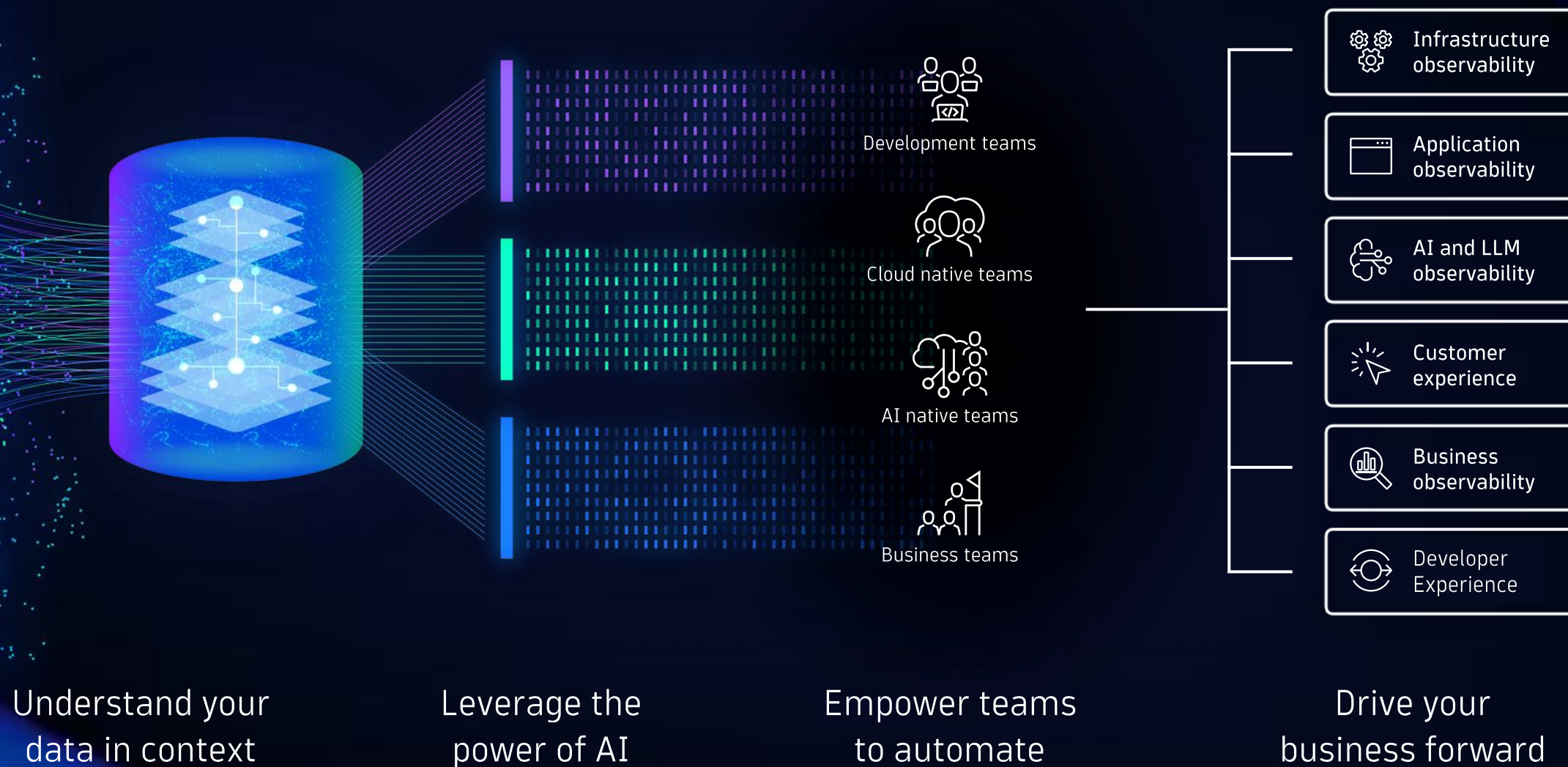
Understand your data in context

Leverage the power of AI

Empower teams to automate

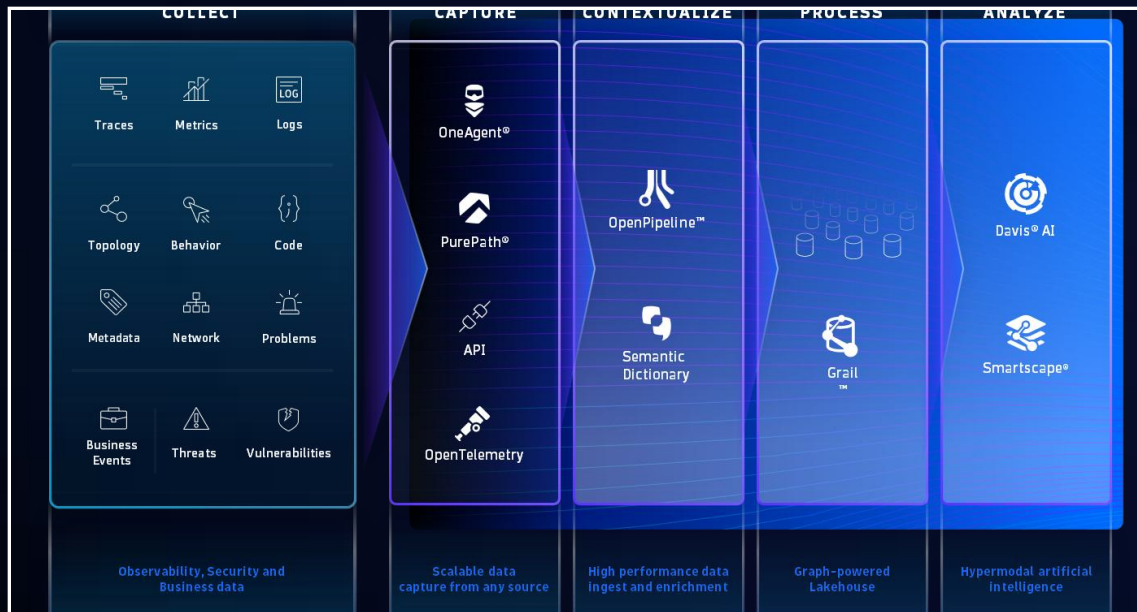


The Dynatrace difference



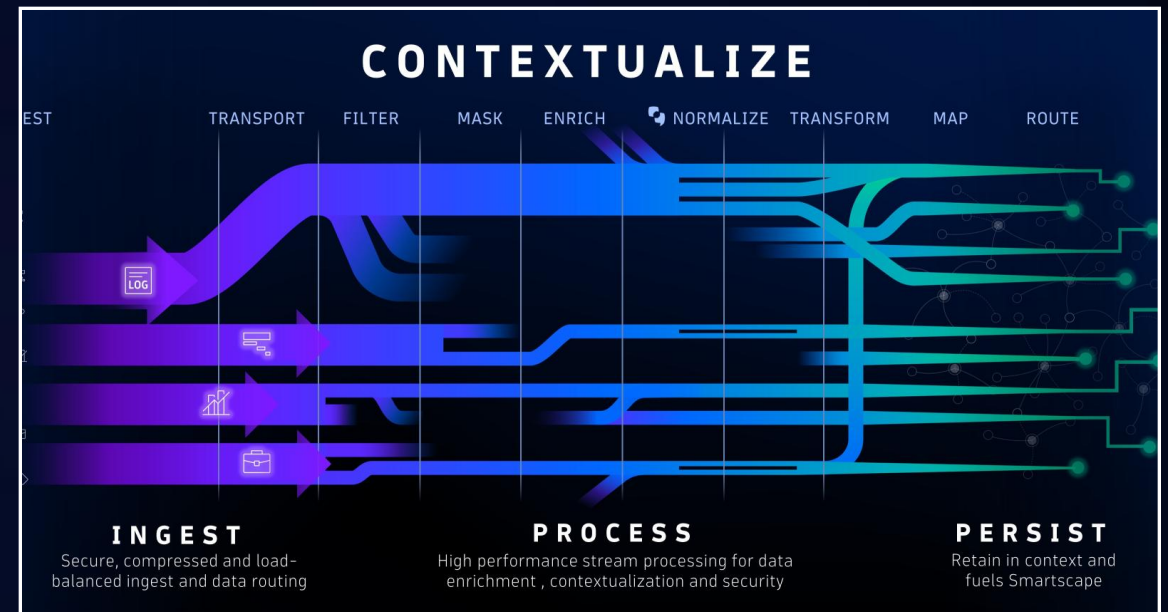
Data in Context – Before Use

|||||



Data Architecture & Flow

- Growing number of data sources -
- Varied data capture methods -
- Semantic Dictionary to standardise -
- Unified data storage for all data -
- Automatic causal analysis -
- Massively parallel processing to query at scale -



OpenPipeline

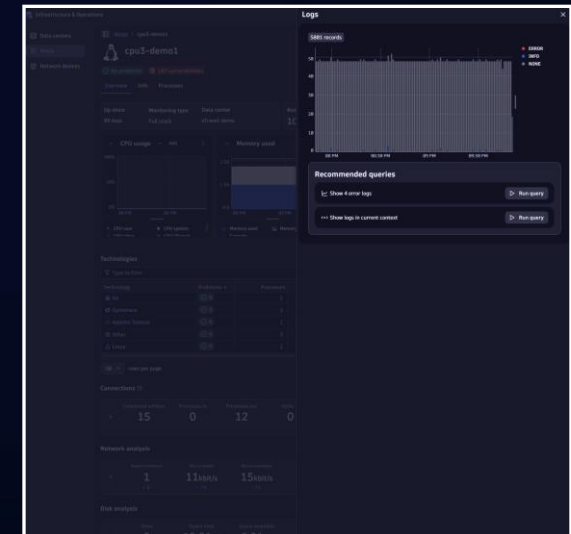
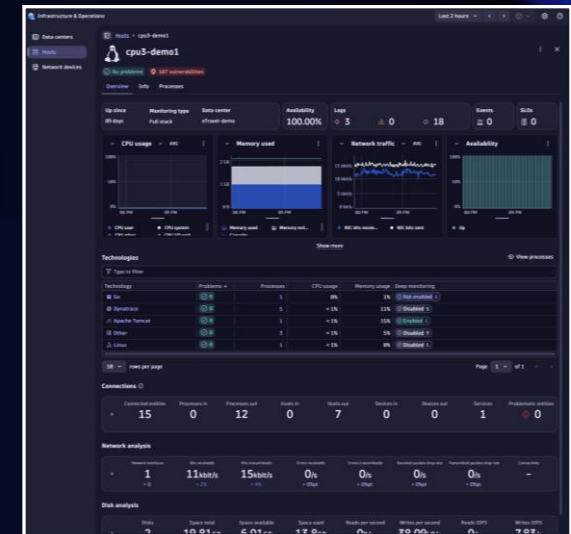
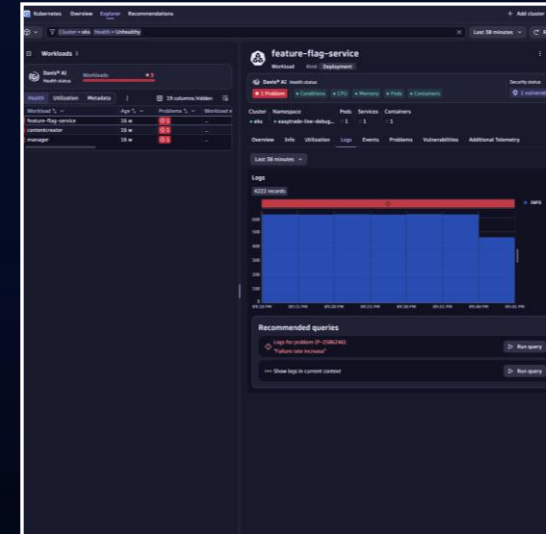
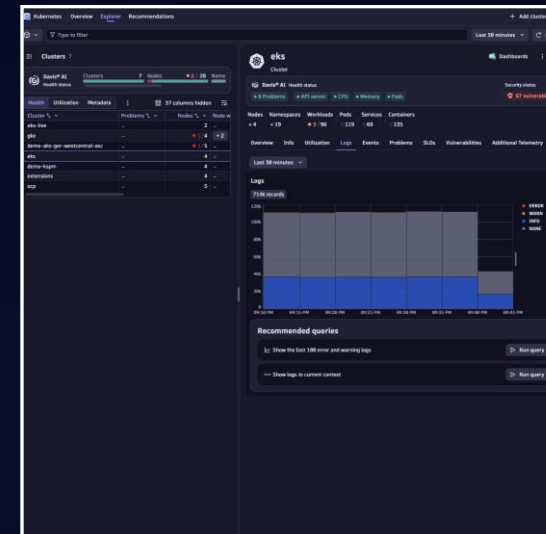
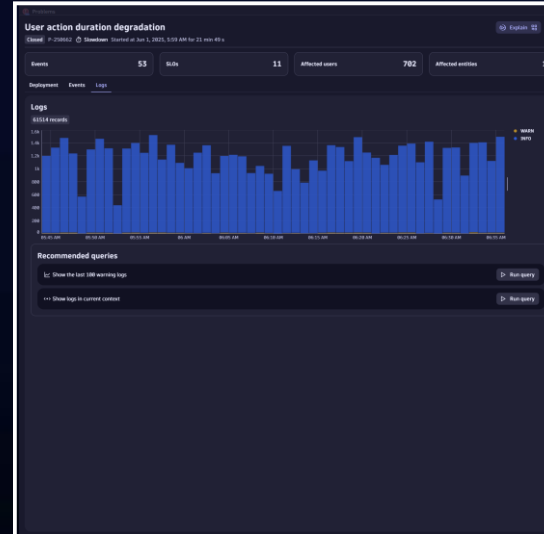
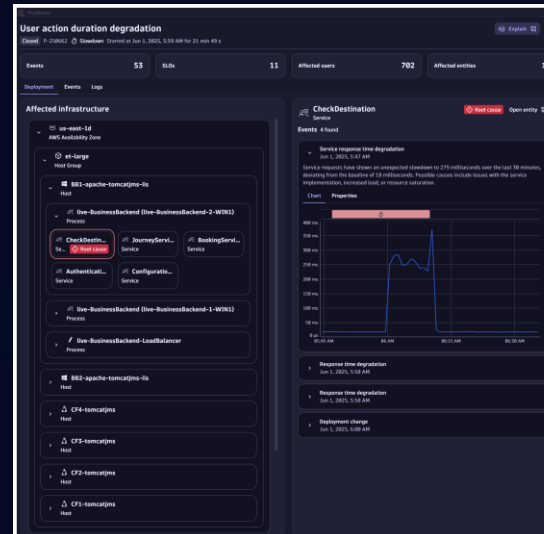
- Ingest or drop?
- Set Retention
- Transform to extract useful data
- Normalize to the semantic dictionary
- Secure via masking and security context
- Manage with cost allocation attributes

Data in Context – During Use (Logs example)

|||||

You should have:

- The data you need when you need it
- Within the context that you are already in
- Automatically highlighting areas of concern/interest
- Suggestions for deeper analysis
- Without the need to leave the flow





UNDERSTAND YOUR BUSINESS
LIKE NEVER BEFORE